

100 m

200 ft

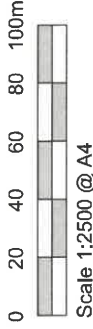
© Crown copyright (and database rights), 2023 OS 100023063. © Crown copyright (and database rights), 2023 OS 100023063. © Crown copyright (and database rights), 2023 OS 100023063.

NOTES AEWTP030C

- All dimensions and levels are to be checked on site.
- Any discrepancies are to be reported to the architect before any work commences.
- This drawing shall not be scaled to ascertain any dimensions. Work to figured dimensions only.
- This drawing shall not be reproduced without express written permission from AEW.
- This conveyance drawings and ownership boundaries are prepared in accordance with the AEW and AEW shall be responsible for the accuracy or scale discrepancy of base plans supplied to them.
- All works are to be undertaken in accordance with Building Regulations and the latest British Standards.
- All proprietary materials and products are to be used strictly in accordance with the manufacturers' recommendations.

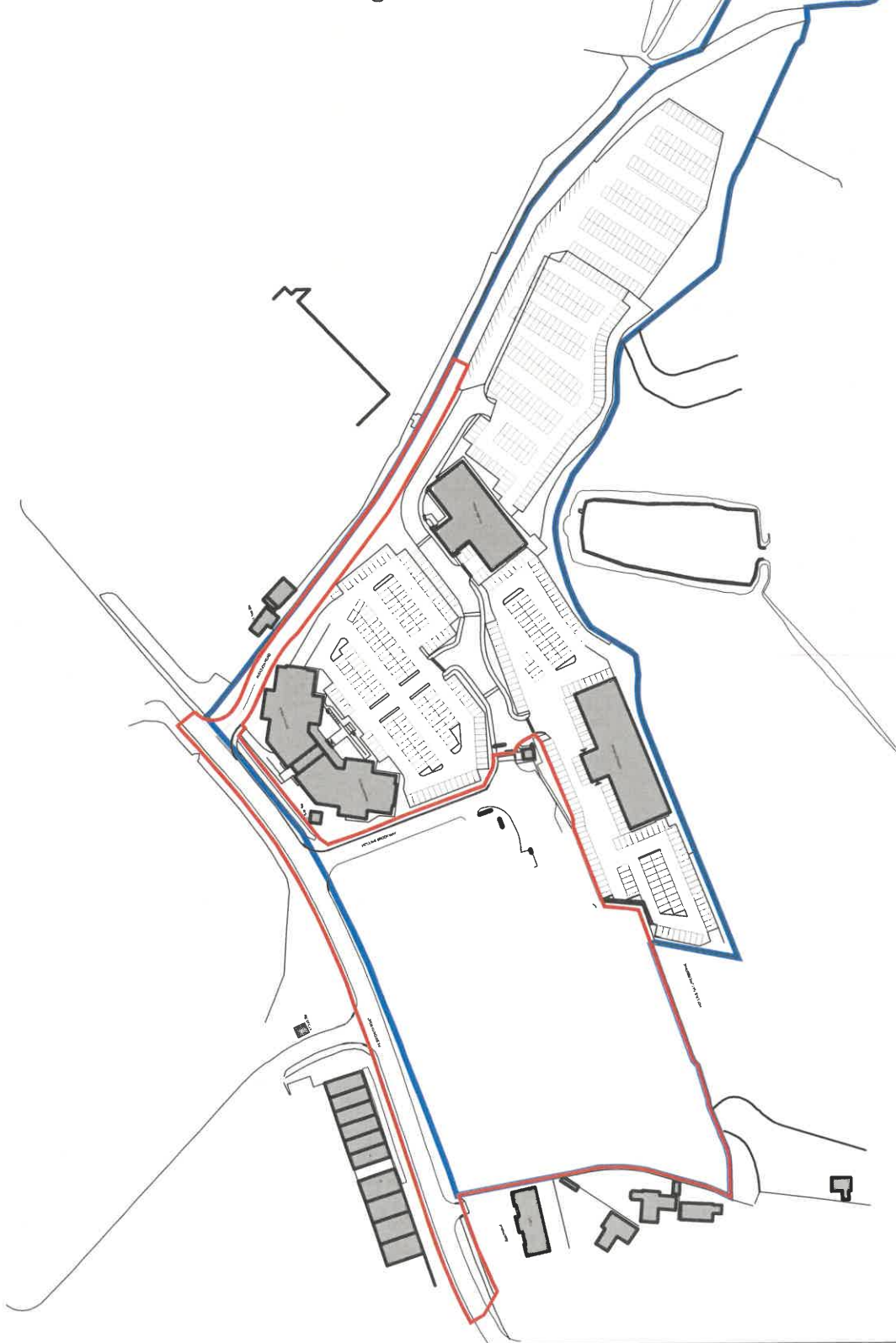
CDM 2015

Client notified of duties: 18/01/2022
 Principal Designer: David M. Eagle Ltd.
 Unless noted below, all known hazards have been highlighted on the drawing:



Key:

- Application Boundary - 2.30ha / 5.67ac
- Land within client ownership



REV	Date	Drawn by: -	Checked by: -
P03	26/05/2022	RP	PBH
Issued for planning			
P02	12/05/2022	RP	RP
Red and blue lines updated to include Avellan Road			
P01	27/04/2022	RP	PBH
Initial Issue			

Status: Purpose of Issue
 S2 For Approval
 drawing stage: **Planning**
 client: **JD Group**

project:
**JD Sports Campus Hub
 (Former A-Plant Site)**

drawing title:
Location Plan

date	23/04/2022	drawn	RP
scale@A4	1:2500	checked	PBH

- NOTES**
- All dimensions and levels are to be checked on site.
 - Any discrepancies are to be reported to the architect.
 - These drawings are to be used for planning purposes only.
 - This drawing shall not be reproduced without express written permission from AEW.
 - The drawings are to be used for planning purposes only and are not to be used for construction purposes. AEW cannot be held responsible for any errors or omissions in these drawings or for any consequences arising from their use.
 - All works are to be undertaken in accordance with Building Regulations and the relevant British Standards.
 - The drawings are to be used for planning purposes only and are not to be used for construction purposes.

AEVTR027C
 11302-AEW-XX-SI-DR-A-0510
 P04

Scale 1:500 @ A2
 0 5 10 15 20 25m

- Legend**
- Red line: Activation Boundary
 - Orange hatched: Proposed employment development (Use Class E1, E2, E3, E4, E5, E6, E7, E8, E9, E10, E11, E12, E13, E14, E15, E16, E17, E18, E19, E20, E21, E22, E23, E24, E25, E26, E27, E28, E29, E30, E31, E32, E33, E34, E35, E36, E37, E38, E39, E40, E41, E42, E43, E44, E45, E46, E47, E48, E49, E50, E51, E52, E53, E54, E55, E56, E57, E58, E59, E60, E61, E62, E63, E64, E65, E66, E67, E68, E69, E70, E71, E72, E73, E74, E75, E76, E77, E78, E79, E80, E81, E82, E83, E84, E85, E86, E87, E88, E89, E90, E91, E92, E93, E94, E95, E96, E97, E98, E99, E100)
 - Grey hatched: Existing Buildings
 - White hatched: Proposed Buildings
 - Red dashed line: Public Right of Way
 - Green line: Green Area
 - Green circle: Existing Trees

Client: JD Group
 Date: 15/10/2022
 Drawn by: [Name]
 Checked by: [Name]

Circle Parking

- 60no. spaces
- JD Staff Parking = 80no. spaces
- 20no. P&C EV spaces
- 5no. P&C EV spaces
- 12no. standard EV spaces
- 36no. standard spaces
- 5no. accessible spaces

Beechwood 1 to 6

Edinburgh House

Landscaped Plaza

Edinburgh House

Edinburgh House

Edinburgh House

Edinburgh House

Edinburgh House

Edinburgh House

Edinburgh House

Edinburgh House

Edinburgh House

Edinburgh House

Edinburgh House

Edinburgh House

Edinburgh House

Edinburgh House

Edinburgh House

Edinburgh House

Edinburgh House

Edinburgh House

Edinburgh House

Edinburgh House

Edinburgh House

Edinburgh House

Edinburgh House

Edinburgh House

Edinburgh House

Edinburgh House

Edinburgh House

Edinburgh House

Edinburgh House

Edinburgh House

Edinburgh House

Edinburgh House

Edinburgh House

Edinburgh House

Edinburgh House

Edinburgh House

Edinburgh House

Edinburgh House

Edinburgh House

Edinburgh House

Edinburgh House

Edinburgh House

Edinburgh House

Edinburgh House

Edinburgh House

Edinburgh House

Edinburgh House

Edinburgh House

Edinburgh House

Edinburgh House

Edinburgh House

Edinburgh House

Edinburgh House

Edinburgh House

Edinburgh House

Edinburgh House

Edinburgh House

Edinburgh House

Edinburgh House

Edinburgh House

Edinburgh House

Edinburgh House

Edinburgh House

Edinburgh House

Edinburgh House

Edinburgh House

Edinburgh House

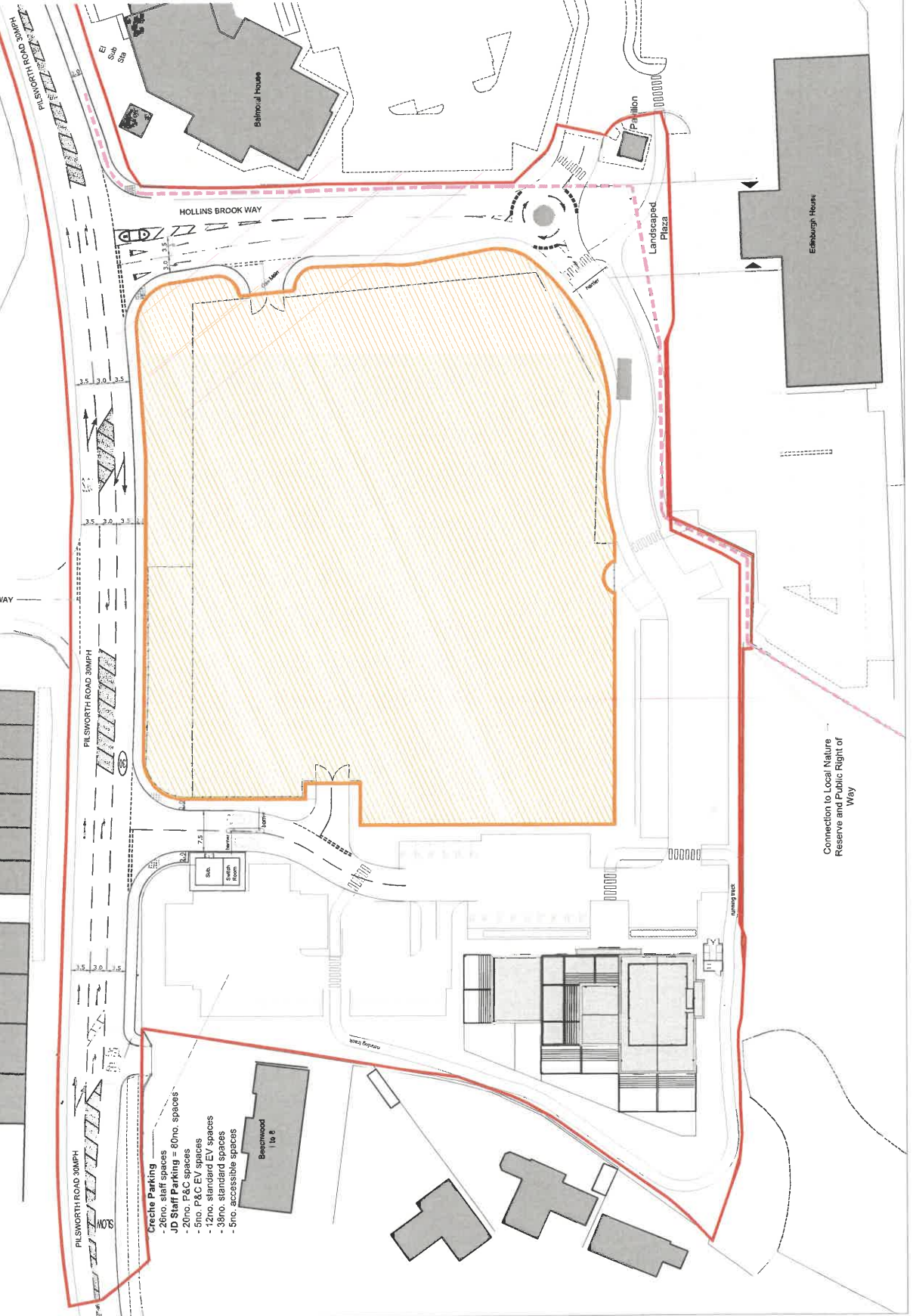
Edinburgh House

Edinburgh House

Edinburgh House

Edinburgh House

Edinburgh House



NOTES

- All dimensions and levels are to be checked on site.
- Any discrepancies are to be reported to the architect.
- These drawings are to be used for planning purposes only.
- This drawing shall not be reproduced without express written permission from AEW.
- The drawings are to be used for planning purposes only and are not to be used for construction purposes. AEW cannot be held responsible for any errors or omissions in these drawings or for any consequences arising from their use.
- All works are to be undertaken in accordance with Building Regulations and the relevant British Standards.
- The drawings are to be used for planning purposes only and are not to be used for construction purposes.

Client: JD Group
 Date: 15/10/2022
 Drawn by: [Name]
 Checked by: [Name]

Scale 1:500 @ A2
 0 5 10 15 20 25m

- Legend**
- Red line: Activation Boundary
 - Orange hatched: Proposed employment development (Use Class E1, E2, E3, E4, E5, E6, E7, E8, E9, E10, E11, E12, E13, E14, E15, E16, E17, E18, E19, E20, E21, E22, E23, E24, E25, E26, E27, E28, E29, E30, E31, E32, E33, E34, E35, E36, E37, E38, E39, E40, E41, E42, E43, E44, E45, E46, E47, E48, E49, E50, E51, E52, E53, E54, E55, E56, E57, E58, E59, E60, E61, E62, E63, E64, E65, E66, E67, E68, E69, E70, E71, E72, E73, E74, E75, E76, E77, E78, E79, E80, E81, E82, E83, E84, E85, E86, E87, E88, E89, E90, E91, E92, E93, E94, E95, E96, E97, E98, E99, E100)
 - Grey hatched: Existing Buildings
 - White hatched: Proposed Buildings
 - Red dashed line: Public Right of Way
 - Green line: Green Area
 - Green circle: Existing Trees

Client: JD Group
 Date: 15/10/2022
 Drawn by: [Name]
 Checked by: [Name]

Circle Parking

- 60no. spaces
- JD Staff Parking = 80no. spaces
- 20no. P&C EV spaces
- 5no. P&C EV spaces
- 12no. standard EV spaces
- 36no. standard spaces
- 5no. accessible spaces

Beechwood 1 to 6

Edinburgh House

Landscaped Plaza

Edinburgh House

Edinburgh House

Edinburgh House

Edinburgh House

Edinburgh House

Edinburgh House

Edinburgh House

Edinburgh House

Edinburgh House

Edinburgh House

Edinburgh House

Edinburgh House

Edinburgh House

Edinburgh House

Edinburgh House

Edinburgh House

Edinburgh House

Edinburgh House

Edinburgh House

Edinburgh House

Edinburgh House

Edinburgh House

Edinburgh House

Edinburgh House

Edinburgh House

Edinburgh House

Edinburgh House

Edinburgh House

Edinburgh House

Edinburgh House

Edinburgh House

Edinburgh House

Edinburgh House

Edinburgh House

Edinburgh House

Edinburgh House

Edinburgh House

Edinburgh House

Edinburgh House

Edinburgh House

Edinburgh House

Edinburgh House

Edinburgh House

Edinburgh House

Edinburgh House

Edinburgh House

Edinburgh House

Edinburgh House

Edinburgh House

Edinburgh House

Edinburgh House

Edinburgh House

Edinburgh House

Edinburgh House

Edinburgh House

Edinburgh House

Edinburgh House

Edinburgh House

Edinburgh House

Edinburgh House

Edinburgh House

Edinburgh House

Edinburgh House

Edinburgh House

Edinburgh House

Edinburgh House

Edinburgh House

Edinburgh House

Edinburgh House

Edinburgh House

Edinburgh House

Edinburgh House

Edinburgh House

Edinburgh House

Edinburgh House

Edinburgh House

Edinburgh House

Edinburgh House

Edinburgh House

Edinburgh House

Edinburgh House

Edinburgh House

Edinburgh House

Edinburgh House

Edinburgh House

Edinburgh House

Edinburgh House

Edinburgh House

Edinburgh House

Edinburgh House

Edinburgh House

Edinburgh House

Edinburgh House

Edinburgh House

Edinburgh House

Edinburgh House

Edinburgh House

Edinburgh House

Edinburgh House

Edinburgh House

Edinburgh House

Edinburgh House

Edinburgh House

Edinburgh House

Edinburgh House

Edinburgh House

Edinburgh House

Edinburgh House

Edinburgh House

Edinburgh House

Edinburgh House

Edinburgh House

Edinburgh House

Edinburgh House

Edinburgh House

Edinburgh House

Edinburgh House

Edinburgh House

Edinburgh House

Edinburgh House

Edinburgh House

Edinburgh House

Edinburgh House

Edinburgh House

Edinburgh House

Edinburgh House

Edinburgh House

Edinburgh House

Edinburgh House

Edinburgh House

Edinburgh House

Edinburgh House

Edinburgh House

Edinburgh House

Edinburgh House

Edinburgh House

Edinburgh House

Edinburgh House

Edinburgh House

Edinburgh House

Edinburgh House

Edinburgh House

Edinburgh House

Edinburgh House

Edinburgh House

Edinburgh House

Edinburgh House

Edinburgh House

Edinburgh House

Edinburgh House

Edinburgh House

Edinburgh House

Edinburgh House

Edinburgh House

Edinburgh House

Edinburgh House

Edinburgh House

Edinburgh House

Edinburgh House

Edinburgh House

Edinburgh House

Edinburgh House

Edinburgh House

Edinburgh House

Edinburgh House

Edinburgh House

Edinburgh House

Edinburgh House

Edinburgh House

Edinburgh House

Edinburgh House

Edinburgh House

- NOTES**
- All dimensions and levels are to be checked on site.
 - Any discrepancies are to be reported to the architect before any work commences.
 - This drawing shall be subject to accurate any dimensions, voids to figure dimensions only.
 - Work shall be carried out in accordance with the contract documents without exception.
 - The overall drawings and ownership boundaries are the responsibility of the architect. The contractor shall be responsible for the accuracy of any dimensions and levels shown on the drawings.
 - All works are to be undertaken in accordance with the relevant standards and specifications.
 - All products, materials and products are to be used in accordance with the manufacturer's instructions.
 - This drawing contains the following model files:
 - 11302-AEW-02-00-DR-A-0520

CDM 2015
 Client contact of site: 1981 02022
 Principal Designer: AEW
 Unless noted later, all known hazards have been highlighted on the drawing.

Level	Area
00 Ground Floor	623.7 m ²
01 First Floor	361.3 m ²
02 Plant Level	102.4 m ²
Grand total	1087.4 m ²

Level	Area
00 Ground Floor	623.7 m ²
01 First Floor	361.3 m ²
02 Plant Level	102.4 m ²
Grand total	1087.4 m ²

Level	Area
00 Ground Floor	623.7 m ²
01 First Floor	361.3 m ²
02 Plant Level	102.4 m ²
Grand total	1087.4 m ²

Level	Area
00 Ground Floor	623.7 m ²
01 First Floor	361.3 m ²
02 Plant Level	102.4 m ²
Grand total	1087.4 m ²

Level	Area
00 Ground Floor	623.7 m ²
01 First Floor	361.3 m ²
02 Plant Level	102.4 m ²
Grand total	1087.4 m ²

Level	Area
00 Ground Floor	623.7 m ²
01 First Floor	361.3 m ²
02 Plant Level	102.4 m ²
Grand total	1087.4 m ²

Level	Area
00 Ground Floor	623.7 m ²
01 First Floor	361.3 m ²
02 Plant Level	102.4 m ²
Grand total	1087.4 m ²

Level	Area
00 Ground Floor	623.7 m ²
01 First Floor	361.3 m ²
02 Plant Level	102.4 m ²
Grand total	1087.4 m ²

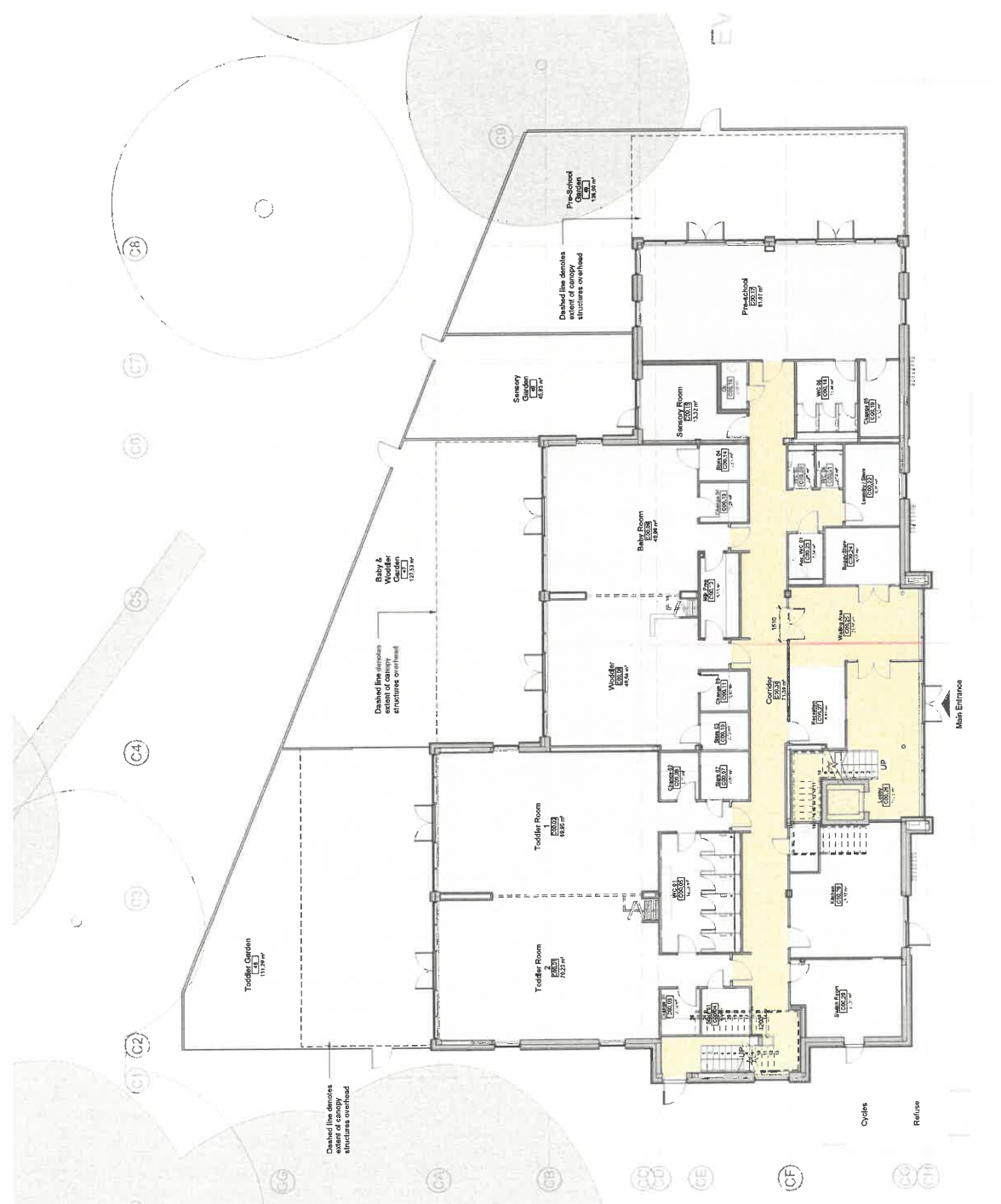
Level	Area
00 Ground Floor	623.7 m ²
01 First Floor	361.3 m ²
02 Plant Level	102.4 m ²
Grand total	1087.4 m ²

Level	Area
00 Ground Floor	623.7 m ²
01 First Floor	361.3 m ²
02 Plant Level	102.4 m ²
Grand total	1087.4 m ²

Level	Area
00 Ground Floor	623.7 m ²
01 First Floor	361.3 m ²
02 Plant Level	102.4 m ²
Grand total	1087.4 m ²

Level	Area
00 Ground Floor	623.7 m ²
01 First Floor	361.3 m ²
02 Plant Level	102.4 m ²
Grand total	1087.4 m ²

Level	Area
00 Ground Floor	623.7 m ²
01 First Floor	361.3 m ²
02 Plant Level	102.4 m ²
Grand total	1087.4 m ²



Proposed Ground Floor Plan
 Scale @ 1:100

JD Group

JD Sports Campus Hub (Former A-Plant Site)

11302-AEW-02-00-DR-A-0520

0161 214 4370

www.aewarchitects.com

NEW

Scale Bars TO BE USED ONLY AS GUIDANCE

1:50	mm	1:100	mm	1:200	mm	1:500	mm	1:1000	mm	1:2000	mm	1:5000	mm
1:50	M	1:100	M	1:500	M	1:1000	M	1:2000	M	1:5000	M	1:10000	M
1:1000	M	1:2000	M	1:5000	M	1:10000	M	1:20000	M	1:50000	M	1:100000	M

NOTES

- All dimensions and levels are to be checked on site.
- Any discrepancies are to be reported to the architect before any work commences.
- This drawing shall not be scaled to ascertain any dimensions. Work to figured dimensions only.
- This drawing shall not be reproduced without express written permission from AEW.
- This overlay drawings and ownership boundaries are produced using all reasonable endeavours. AEW cannot be responsible for the accuracy or scale discrepancy of base plans supplied to them.
- All works are to be undertaken in accordance with Building Regulations and the latest British Standards.
- All proprietary materials and products are to be used strictly in accordance with the manufacturers recommendations.

This drawing contains the following model files: -

11302-AEW-XX-XX-M3A-0001

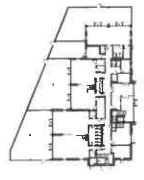
CDM 2015

Client notified of duties: 19/01/2022

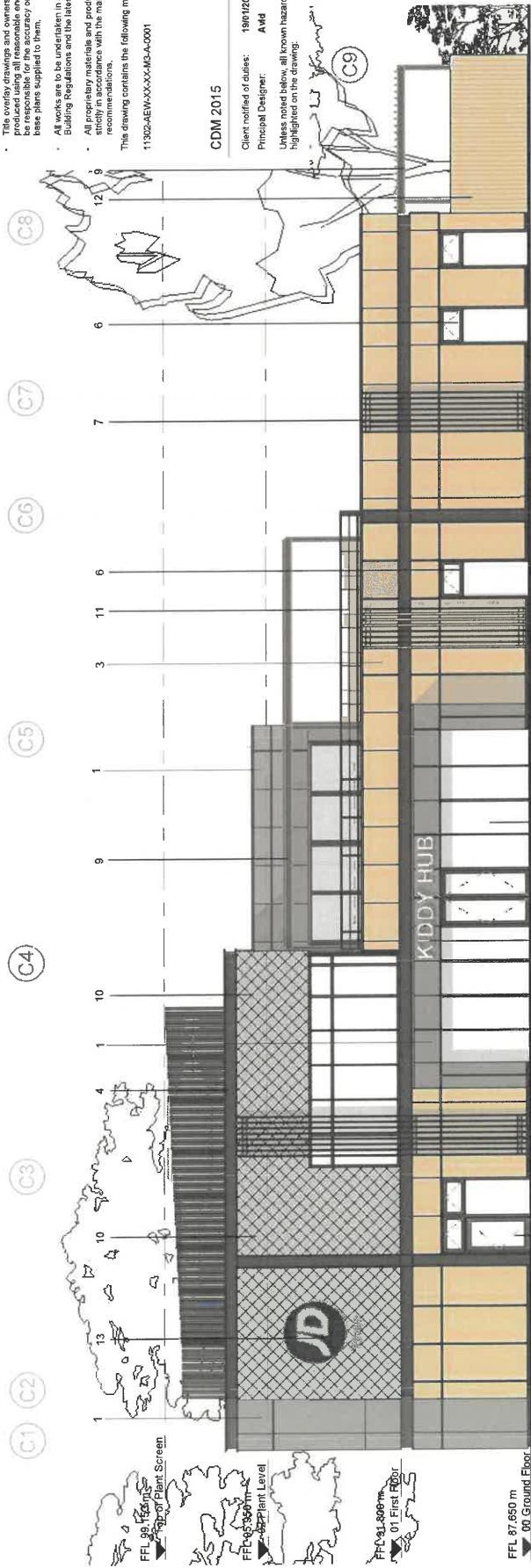
Principal Designer: AMG

Unless noted below, all known hazards have been highlighted on the drawing.

- KEY**
- Dark grey metal cladding with feature joints
 - Light grey metal cladding with feature joints
 - Natural limerock cladding with feature joints
 - Black painted coping / feature cladding band
 - Black painted coping / feature cladding band
 - Crinkle walling / windows with black frames
 - Feature vertical line - colour TBC
 - Feature vertical line - colour TBC
 - Canopies to play areas - colour TBC
 - Canopies to play areas - colour TBC
 - PPC aluminium bar balustrade in dark grey
 - Close boarded timber acoustic fence to play areas
 - Black timber cladding to play areas application
 - Black brick pavers with dark grey mortar
 - PPC laminated panels to match cladding



Key Plan



Proposed North East Elevation
Scale @ 1 : 100

Status	Date	Description	Drawn	Checked	By
P05	07/10/22	Elevations received for planning	RP	PBH	
P04	05/10/22	Revised planning issue	RP	PBH	
P03	12/05/22	Updated to planning consultant	RP	PBH	
P02	20/04/22	Revised to latest design	RP	PBH	
P01	27/04/22	Initial Design Issue	RP	PBH	

Purpose of Issue
S2 For Approval
drawing stage Stage 4

client

JD Group

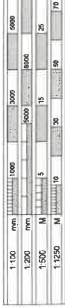
project
JD Sports Campus Hub (Former A-Plant Site)

drawing file

Creche - Proposed North East Elevation

date 04/05/22 drawn KJ
scale @ A2 As indicated checked PBH

Scale Bars TO BE USED ONLY AS GUIDANCE



NOTES

- All dimensions and levels are to be checked on site.
- Any discrepancies are to be reported to the architect before any work commences.
- This drawing shall not be scaled to ascertain any dimensions. Work to figured dimensions only.
- This drawing shall not be reproduced without express written permission from AEW.
- The overlay drawings and ownership boundaries are produced using all reasonable endeavours. AEW cannot be responsible for the accuracy or scale discrepancy of base plans supplied to them.
- All works are to be undertaken in accordance with Building Regulations and the latest British Standards.
- All proprietary materials and products are to be used strictly in accordance with the manufacturers recommendations.

This drawing contains the following model files: -

11302-AEW-XXX-XX-M3-A-0001

CDM 2015

Client/modified of duties: 19012022

Principal Designer: AMG

Unless noted below, all known hazards have been highlighted on the drawing.

Rev	Date	Description	Drawn	Checked
P05	07/10/22	Elaborations requested for planning	RP	PBH
P04	09/10/22	Revised planning issue	RP	PBH
P03	12/09/22	Updated to planning consultant	RP	PBH
P02	29/04/22	Revised to latest design	RP	PBH
P01	27/04/22	Initial Drawing Issue	RP	PBH

Status: S2 For Approval
drawing stage: Stage 4
client: JD Group

Project: JD Sports Campus Hub (Former A-Plant Site)

Proposed South East Elevation
Scale @ 1 : 100

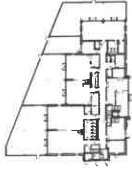
date: 04/05/22
scale @ A2: As indicated

drawn: KJ
checked: PBH

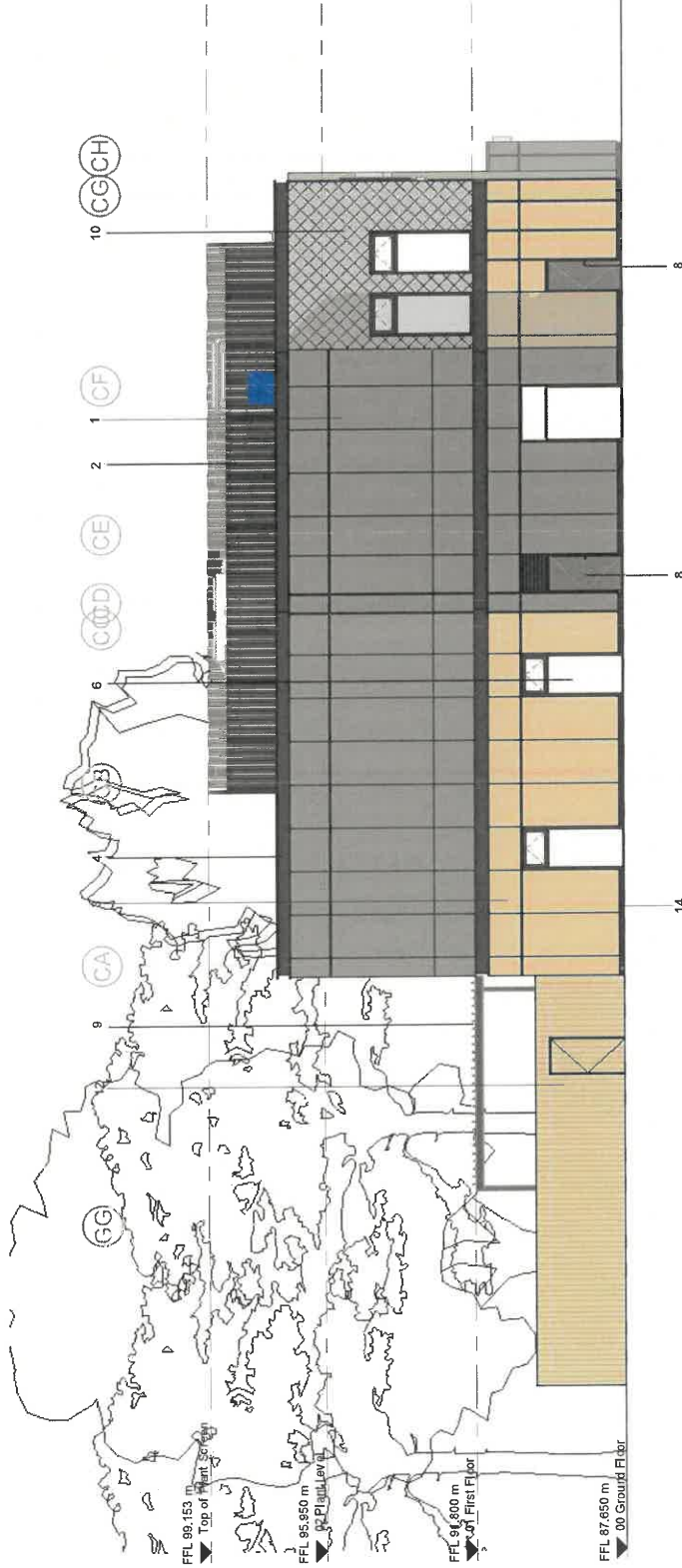
drawing title: Creche - Proposed South East Elevation

Key

- Dark grey metal cladding with fabric-like finish.
- PPC framed glazed doors and windows.
- Natural louver metal cladding with feature panels.
- Dark grey metal cladding with fabric-like finish.
- Curtain walling to main entrance with black frames.
- Curtain walling / windows with black frames.
- Dark grey metal cladding with over-door louvers.
- Dark grey metal cladding with over-door louvers.
- Manholes to play areas - colour TBC
- Manholes to play areas - colour TBC
- PPC aluminium bar balustrade in dark grey.
- Dark grey metal cladding with fabric-like finish.
- Black brick piers with dark grey mortar.
- Black brick piers with dark grey mortar.
- PPC frame paint to match cladding.



Key Plan





11302 - Hub, JD Campus

ILLUSTRATIVE VIEW 01 - View from Hollins Brook Way Site Entrance

DATE 24.05.22

11302-AEW-023-KNF-0802-62-P01_Illustrative 3D Views (Zonic 2)

FOR ILLUSTRATIVE PURPOSES ONLY





11302 - Hub, JD Campus

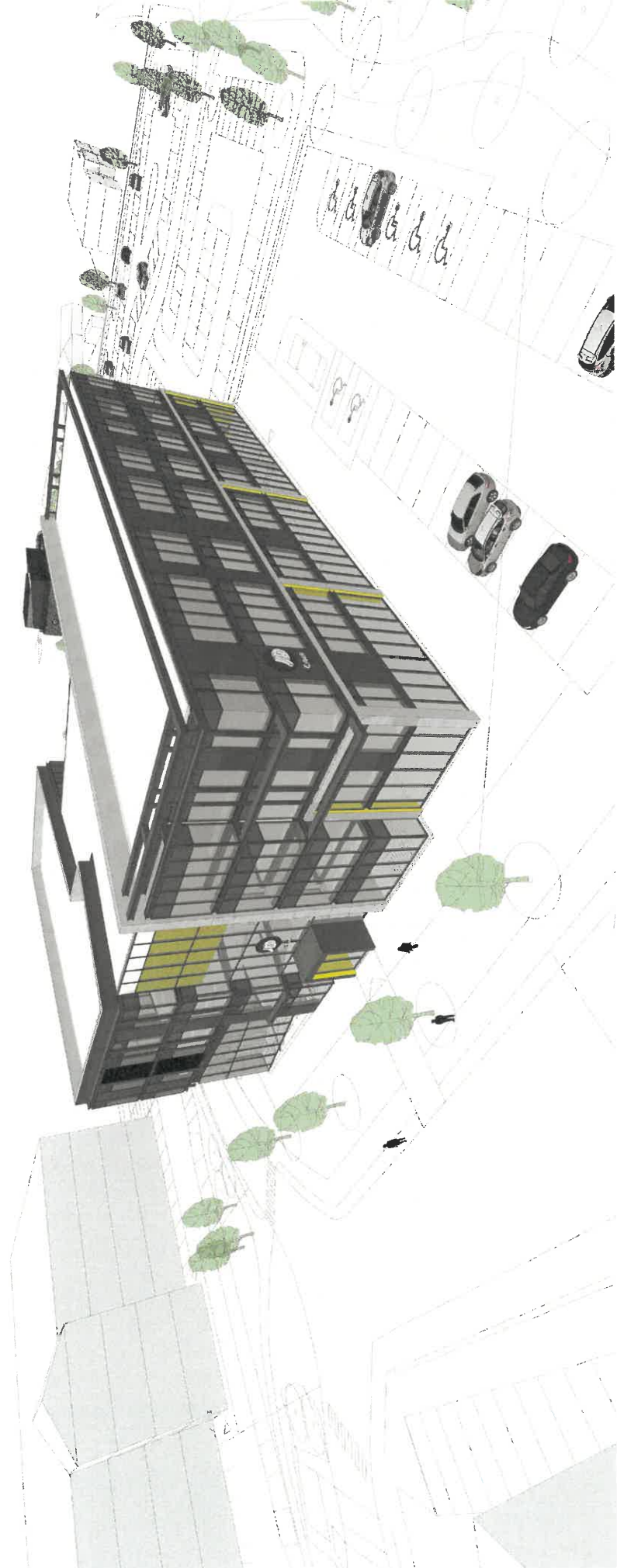
ILLUSTRATIVE VIEW 02 - View across 5-a-side Pitch

DATE 24-05-22

11302-AEW-02-XY-VF-0502-S2-P01_Illustrative 3D Views (Zone 2)

FOR ILLUSTRATIVE PURPOSES ONLY





11302 - Hub, JD Campus

ILLUSTRATIVE VIEW 03 - Aerial View (Front)

DATE 24.05.22
11302-AEW-02-X-V-F-0502-S--P01_Illustrative 3D Views (Zone 2)

FOR ILLUSTRATIVE PURPOSES ONLY





11302 - Hub, JD Campus

ILLUSTRATIVE VIEW 04 - Aerial View (Rear)

DATE 24.05.22

11302-AEW-02-XX-VF-0502-52-P01_Illustrative 3D Views (Zone 2)

FOR ILLUSTRATIVE PURPOSES ONLY



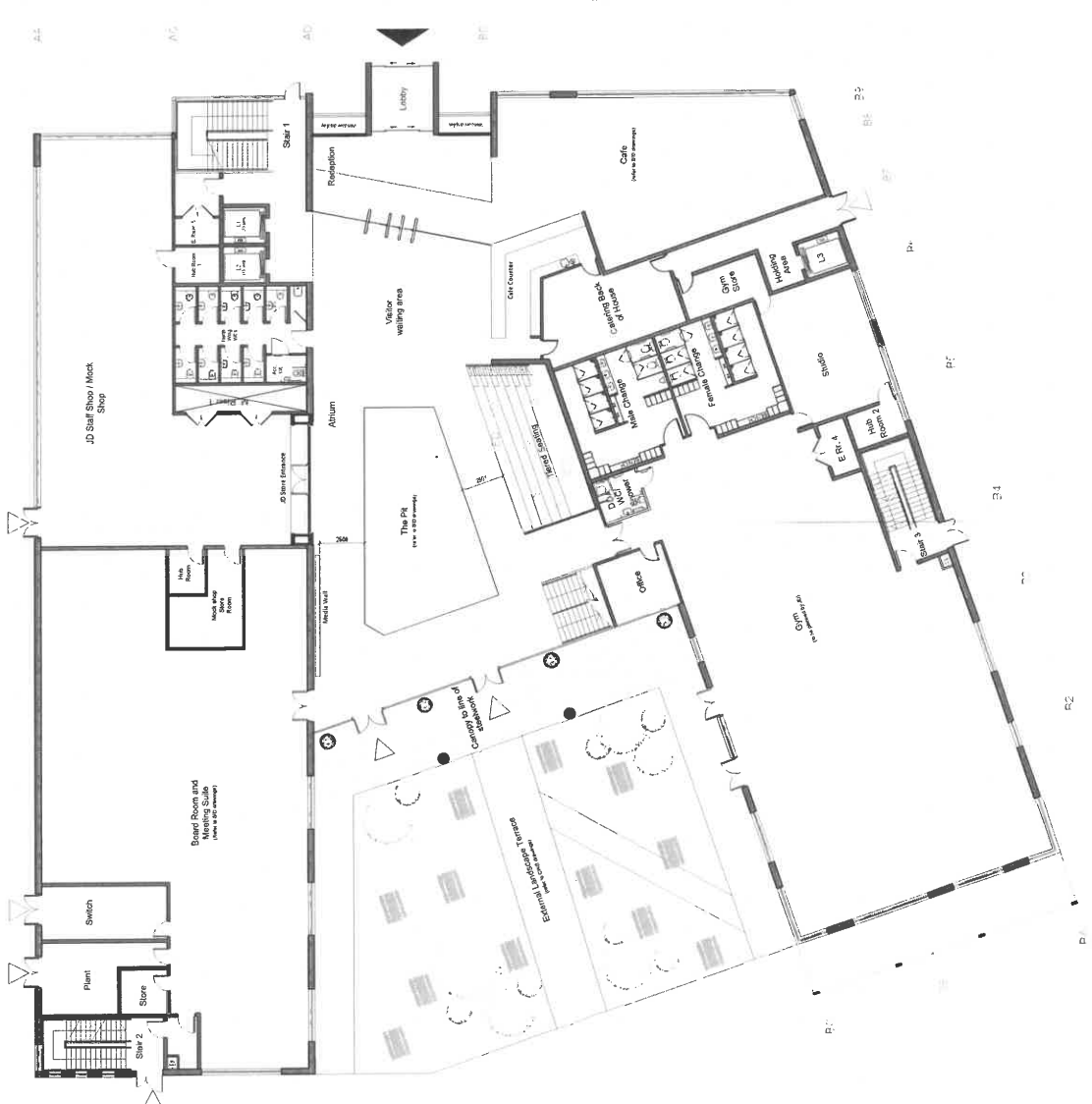
- NOTES** AEVTF027C
- All dimensions and levels are to be checked on site.
 - Any discrepancies are to be reported to the architect.
 - Dimensions are to be taken to the face of the work unless otherwise stated.
 - The drawing shall not be reproduced without express written permission from AECV.
 - Any works to be undertaken in accordance with this drawing shall be undertaken in accordance with the relevant Building Regulations and the latest British Standards.
 - Any works to be undertaken shall be undertaken in accordance with the relevant Building Regulations and the latest British Standards.
 - Any works to be undertaken shall be undertaken in accordance with the relevant Building Regulations and the latest British Standards.

CDM 2015

Client: JD Sports
 Project: JD Sports Campus Hub
 Location: JD Sports Campus Hub
 Drawn by: [Name]
 Checked by: [Name]



FOR ILLUSTRATIVE PURPOSES ONLY



REV	Date	Drawn by	Checked by
PS1	20/05/2022	RP	PS1
PS2			
PS3			
PS4			
PS5			
PS6			
PS7			
PS8			
PS9			
PS10			
PS11			
PS12			
PS13			
PS14			
PS15			
PS16			
PS17			
PS18			
PS19			
PS20			
PS21			
PS22			
PS23			
PS24			
PS25			
PS26			
PS27			
PS28			
PS29			
PS30			
PS31			
PS32			
PS33			
PS34			
PS35			
PS36			
PS37			
PS38			
PS39			
PS40			
PS41			
PS42			
PS43			
PS44			
PS45			
PS46			
PS47			
PS48			
PS49			
PS50			
PS51			
PS52			
PS53			
PS54			
PS55			
PS56			
PS57			
PS58			
PS59			
PS60			
PS61			
PS62			
PS63			
PS64			
PS65			
PS66			
PS67			
PS68			
PS69			
PS70			
PS71			
PS72			
PS73			
PS74			
PS75			
PS76			
PS77			
PS78			
PS79			
PS80			
PS81			
PS82			
PS83			
PS84			
PS85			
PS86			
PS87			
PS88			
PS89			
PS90			
PS91			
PS92			
PS93			
PS94			
PS95			
PS96			
PS97			
PS98			
PS99			
PS100			

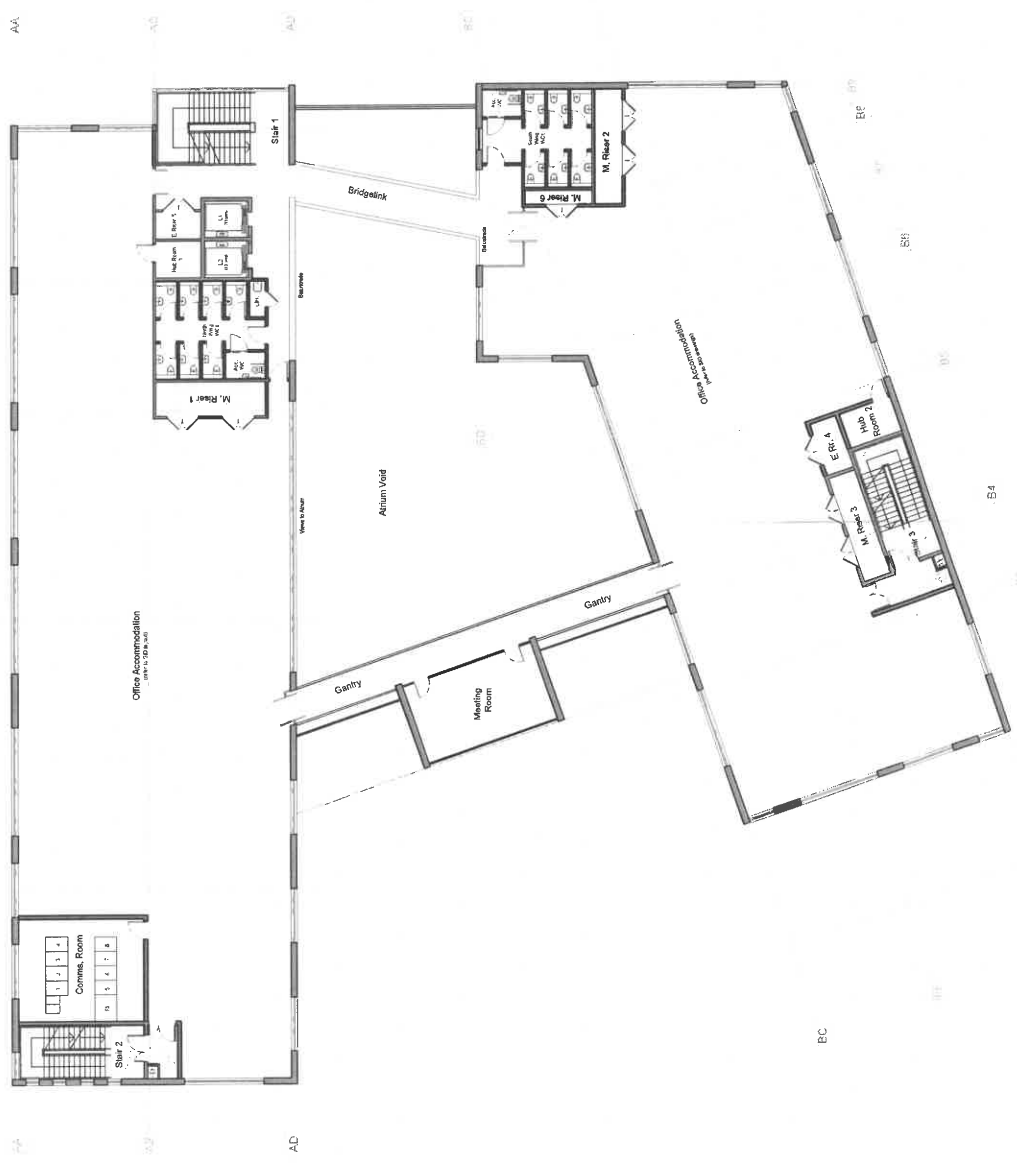
- NOTES** AEVTP027C
- All dimensions and levels are to be checked on site.
 - Any discrepancies are to be reported to the architect immediately.
 - The design shall not be reproduced without express written permission from AECV.
 - The drawing shall not be reproduced without express written permission from AECV.
 - All works are to be undertaken in accordance with Building Regulations and the latest British Standards.
 - All work is to be completed within the programme of works.
 - All work is to be completed within the programme of works.
 - All work is to be completed within the programme of works.

CDM 2015
 Client: J.P. Sports
 Project: J.P. Sports Campus Hub
 Design: J.P. Sports
 Location: J.P. Sports Campus Hub
 Scale: 1:200 @ A2



0 2 4 6 8 10m
 Scale 1:200 @ A2

FOR ILLUSTRATIVE PURPOSES ONLY



Job No: 11302-AEW-01-02-DR-A-0572
 Date: 10/12/2021
 Scale: 1:200

Client: J.P. Sports
 Project: J.P. Sports Campus Hub
 Design: J.P. Sports
 Location: J.P. Sports Campus Hub

CDM 2015
 Client: J.P. Sports
 Project: J.P. Sports Campus Hub
 Design: J.P. Sports
 Location: J.P. Sports Campus Hub

Scale: 1:200 @ A2

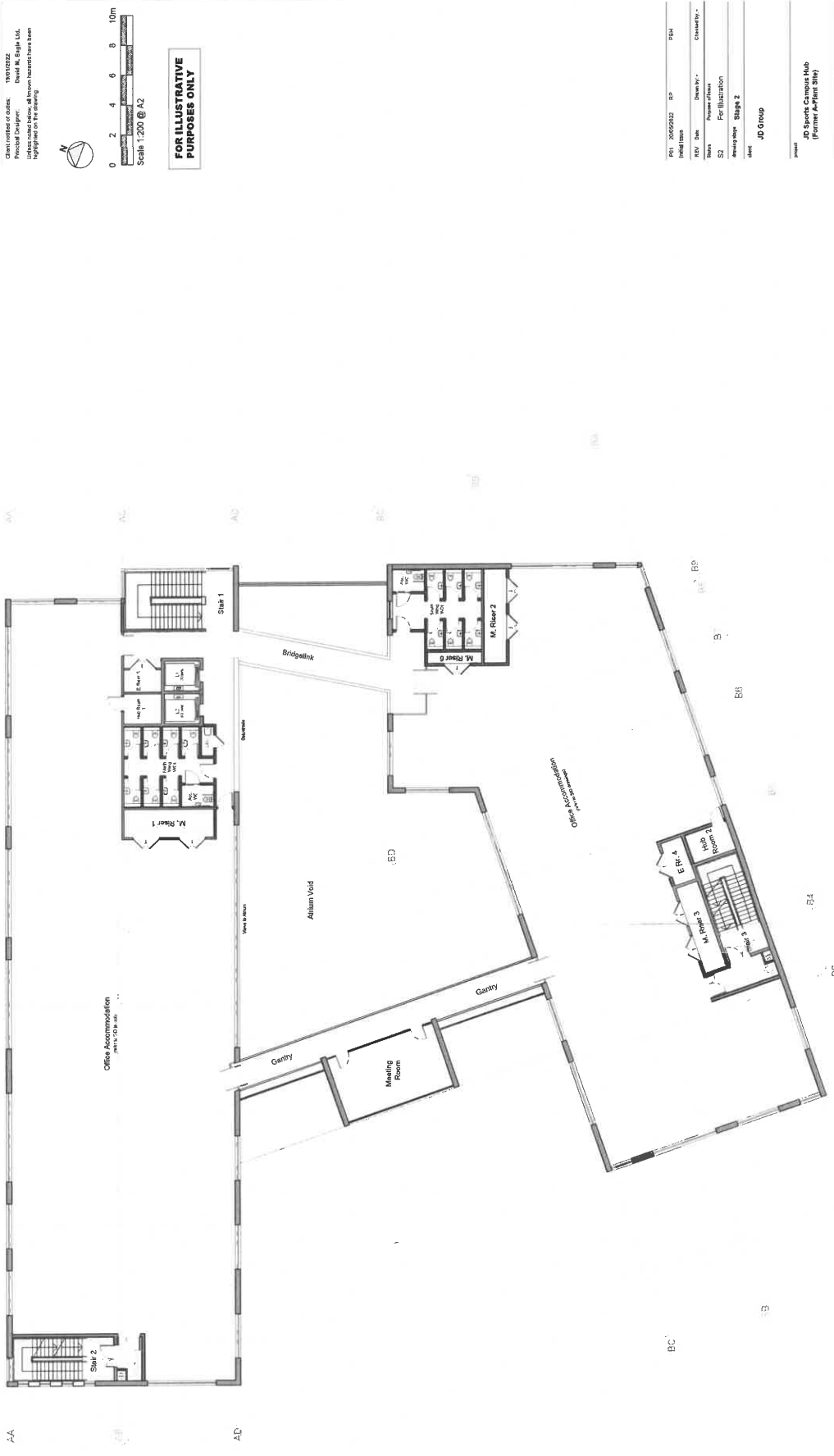
FOR ILLUSTRATIVE PURPOSES ONLY

0 2 4 6 8 10m

Scale 1:200 @ A2

FOR ILLUSTRATIVE PURPOSES ONLY

Project No	11302-AEW-01-03-DR-A-0573
Project Name	JD Sports Campus Hub (Former A-Plant Site)
Client	JD Group
Drawn By	David M. Eagle
Checked By	David M. Eagle
Project Reference	For Illustration
Revision Stage	Stage 2
Sheet	
Scale	1:200
Date	23/02/22
Drawn	David M. Eagle
Checked	David M. Eagle
Project	JD Sports Campus Hub (Former A-Plant Site)
Sheet No	Proposed Third Floor Plan



FOR ILLUSTRATIVE PURPOSES ONLY



CDM 2015
Client notified of duties: 19/04/2022
Principal Designer: David M. Eagle Ltd.
Principal Contractor: 90W Architects Ltd.
Highways or other works: No highways or other works have been notified for this project.

- NOTES** AEW/DPZ/C
- All dimensions and levels are to be checked on site.
 - Any discrepancies are to be reported to the architect before any work commences.
 - The contractor shall be responsible for the accuracy of all dimensions, work to be done, and any other information. Work to be done shall be confirmed in writing prior to commencement.
 - This drawing shall not be reproduced without express written permission from AEW.
 - All works are to be undertaken in accordance with the Building Regulations and the latest British Standards.
 - All proprietary materials and products are to be used in accordance with the manufacturer's instructions and recommendations.